



Solutions in Fiber



bejed.com

Profile

BEJED, Inc.'s engineering designs have been supporting the telecommunications industry for almost 50 years. Our excellence in manufacturing has made us the "vendor of choice," as well as an OEM for many major companies.

Mission

To engineer products which satisfy your telecommunications needs with tomorrow's technology... today.

Warranty

BEJED, Inc.'s passive product line carries a lifetime warranty against manufacturing defects, during normal usage.

Return Policy

If there is a problem or questions regarding your order, please call 503-281-8153 for instructions. Any stock items in our catalog may be returned after your prompt inspection of received goods. We do this to ensure quality in handling warranty and returned items.

Return Merchandise Authorization (RMA) numbers must be requested within 3 days of receipt of your order and returned to us within 14 days from receipt of goods.

All product returns must be marked with an assigned RMA number and must be in their original shipping containers. Credits will not be issued without an RMA number, and only after inspection of the returned product.

Custom made/altered items and items not in the catalog cannot be accepted for return.

We reserve the right to charge a 25% restocking fee for all products returned.

Order Policy

All payments must be in US dollars. MasterCard and Visa are accepted. Net 30 accounts are available upon approved credit (please contact BEJED for a credit application). All shipments are FOB:Troutdale, OR and will be subject to shipping and handling fees. Overdue accounts may be subject to a 2% monthly finance charge.

In case of price deviations, notification will be made prior to processing your order.

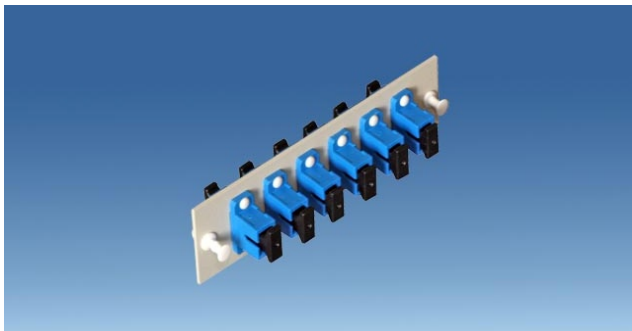
Specification sheets available on most catalog items.

Quantity discounts available upon request.



Solutions in Fiber

Coupler Plates



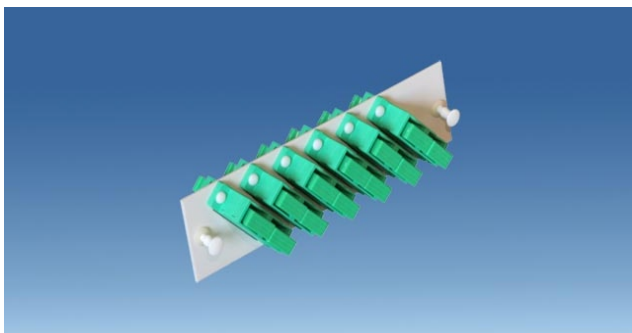
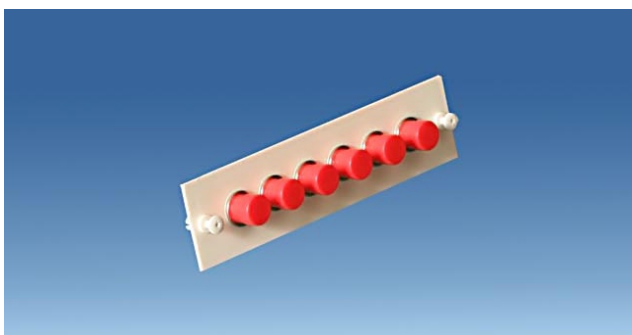
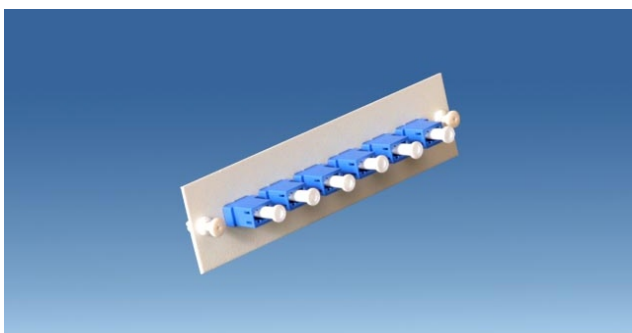
All BEJED Fiber Distribution Units are designed to use modular Coupler Plates allowing the type and quantity of fiber connections to meet the needs of the customer. Push rivets allow for easy installation. Plates can be provided with standard, hybrid fiber, RJ or modular couplers and dust caps are always included.

Standard plates* are available for 6, 8 or 12 fibers.

How to choose coupler plates:

To determine the capacity of any of our FDUs, simply multiply the number of plates by the number of positions on each plate.

$$\text{Plates} \times \text{Positions} = \text{Total Connections}$$



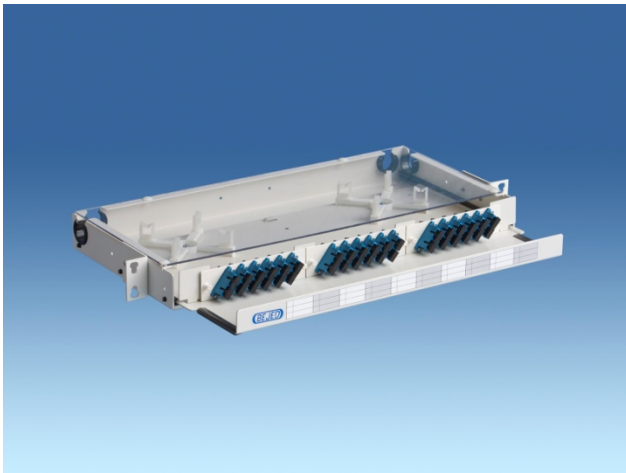
BJ-66ABC-DEE

A	B	C	D	EE
CONNECTOR FAMILY	FIBERS PER CONNECTOR	CONNECTOR TYPE/POLISH	MATERIAL/COLOR	NO. OF COUPLERS
0=BLANK	0=NONE	A=APC	1=METAL, WHITE	04
1=ST	1=SMPLX	M= MULTI-MODE	2=METAL, BLACK	06
2=SC	2=DPLX	N= NETWORK	3=PLASTIC, WHITE	08
3=FC	4=QUAD	S=SINGLE-MODE	4=PLATIC, BLACK	12
4=D4		U= UNLOADED	9= CUSTOM	*CUSTOM
5=FUTURE		X= FEMALE		
6=LC		Y= MALE		
7=MTRJ		P= RJ-11		
8=RJ		Q= RJ-45		
9=CUSTOM		R= RJ-48		
		L=RJ-48c		
		T= RJ-48x		

*Custom connector plates also available.

Rack Mount FDU's

Single Rack Units - Our starting point for fiber solutions, these solutions maximize quality in minimum space.



BJ-1961

1 RU, 3 Plates

- Ideal for Central Office and POP fiber cross-connects
- Light, sturdy aluminum construction
- 19 inch rack mounts
- Adaptable to 23 inch mounts with BJ-2005
- Hanging mount available



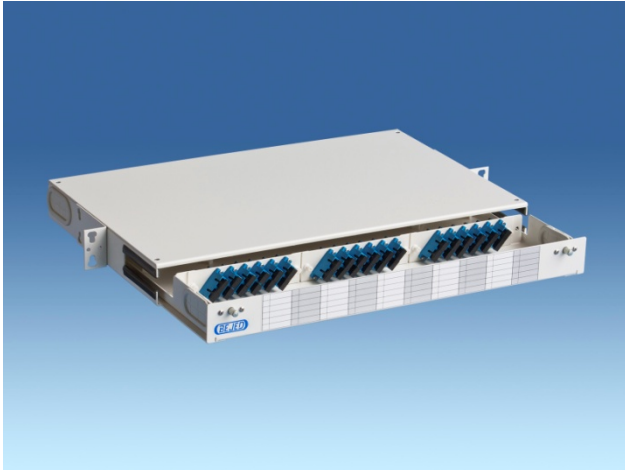
BJ-1833

1 RU, 2 Plates

- Mounts flush to rack
- Durable aluminum and steel construction
- Available in 19 or 23 inch rack mounts
- Will accommodate splitters for cable television
- Swings out for easy access
- Comes with integral splicing for up to 24 fibers and does not require additional splice trays

Rack Mount FDU's

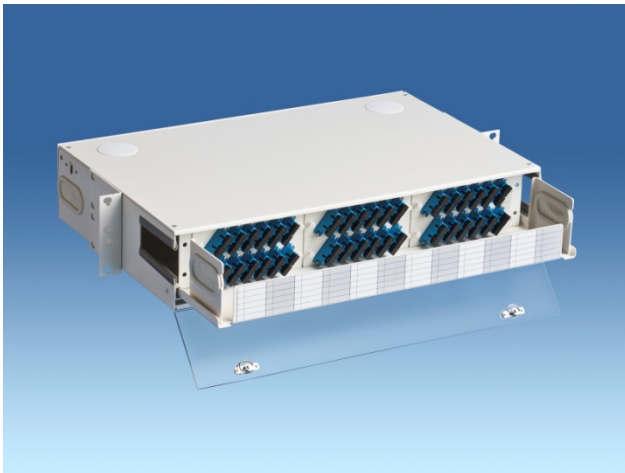
Standard Series - Our most popular series of products feature a slide out shelf and can be configured for splice storage.



BJ-2113

1 RU, 3 Plates

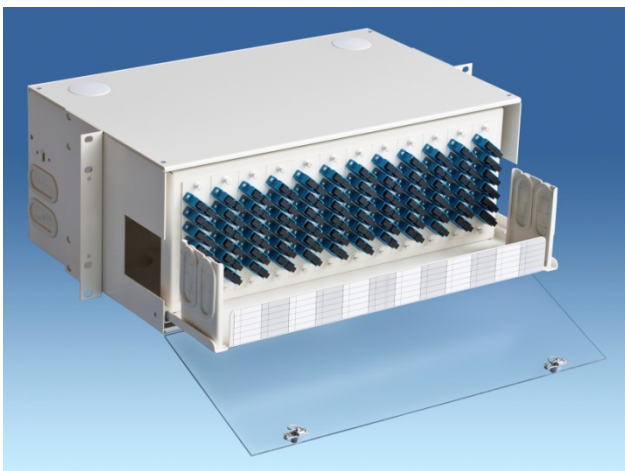
- Light, sturdy aluminum construction
- Can be configured with angled coupler plates for ease of access
- Includes 19 and 23 inch rack mounts
- Slide-out fiber termination shelf



BJ-2116

2 RU, 6 Plates

- Available in both traditional flat, or angled coupler plates
- Light, sturdy aluminum Construction
- Clear polycarbonate door
- Includes 19 and 23 inch rack mounts



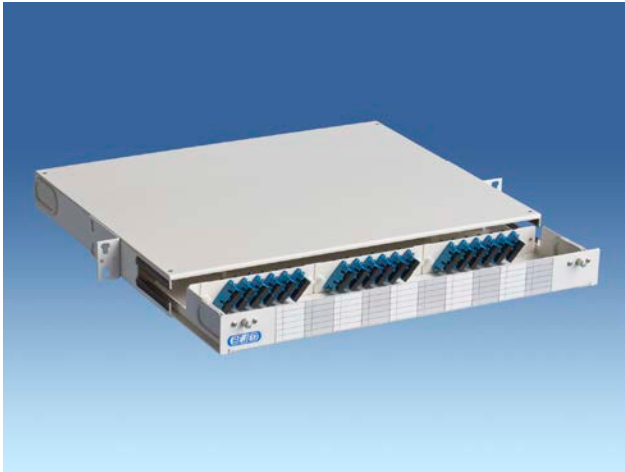
BJ-2118

4 RU, 12 Plates

- Available in Horizontal, vertical, or angled coupler panels
- Light, sturdy aluminum construction
- Includes 19 and 23 inch rack mounts

Rack Mount FDU's

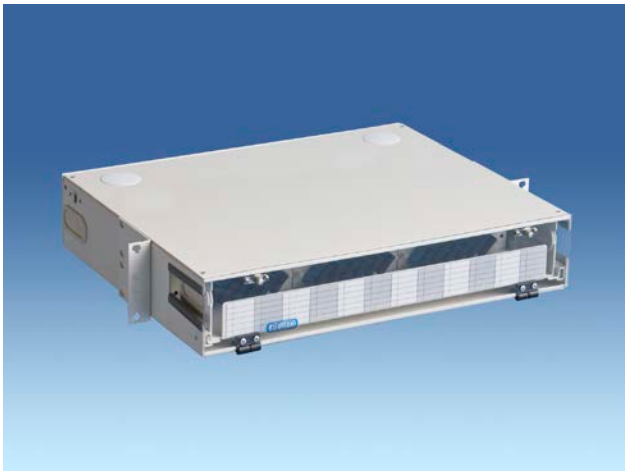
Plus Series - Additional 3" of depth and all the features of our standard series to support our 1742 splice cases and 2182 cassettes.



BJ-2214

1 RU, 3 Plates

- Light, sturdy aluminum construction
- Can be configured with angled coupler plates for ease of access
- Includes 19 and 23 inch rack mounts
- Slide-out fiber termination shelf
- 14" Unit Depth



BJ-2216

2 RU, 6 Plates

- Available in both traditional flat, or angled coupler plates
- Light, sturdy aluminum Construction
- Includes 19 and 23 inch rack mounts
- 14" Unit Depth



BJ-2218

4 RU, 12 Plates

- Available in Horizontal, vertical, or angled coupler panels
- Light, sturdy aluminum construction
- Includes 19 and 23 inch rack mounts
- 14" Unit Depth

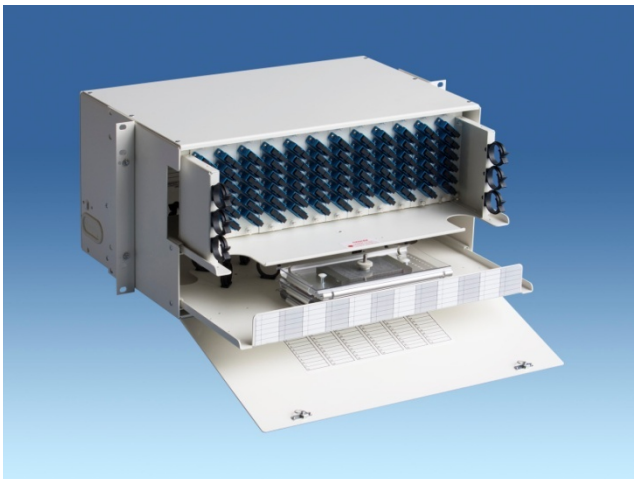
Rack Mount FDU's

Medium Density Rack Units - Dedicated splice tray storage and slide out shelves give you excellent access when splicing fiber optic pigtails within a single rack mount solution.



BJ-1983 3 RU, 6 Plates

- Ideal for Central Office or POP fiber cross-connects
- Designed with ample room for fiber routing and storage
- Durable steel and aluminum construction
- Includes 19 and 23 inch rack mounts

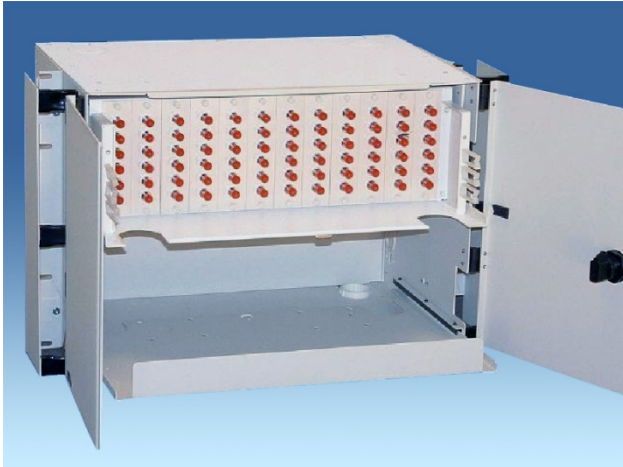


BJ-1984 5 RU, 12 Plates

- Built with Central Office and POP fiber applications in mind
- Strong steel construction
- Includes 19 and 23 inch rack mounts
- Vertical cable management

Rack Mount FDU's

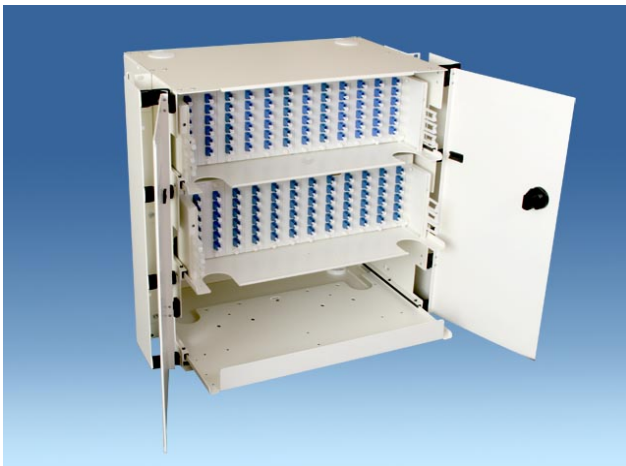
High Density Rack Units - For installations that demand no compromise, these products deliver maximum capacity for connectors and splice storage with multiple sliding shelves.



BJ-1939

7 RU

- When configured as a splice storage cabinet, can hold up to 22 splice trays for up to 528 splices
- Light, sturdy aluminum construction
- Doors with Key Locks available for added security
- Includes 19 and 23 inch rack mounts
- Vertical fiber Management for ease of use



BJ-1940

10 RU

- When configured as a splice storage cabinet, can hold up to 32 splice trays for up to 768 splices. One of the best in the industry
- Vertical fiber management for ease of use
- Includes 19 and 23 inch rack mounts
- Metal Doors with key locks for added security

Photos above do not reflect the splice tray implementation. Photos with splice trays coming soon.

Wall Mount FDU's

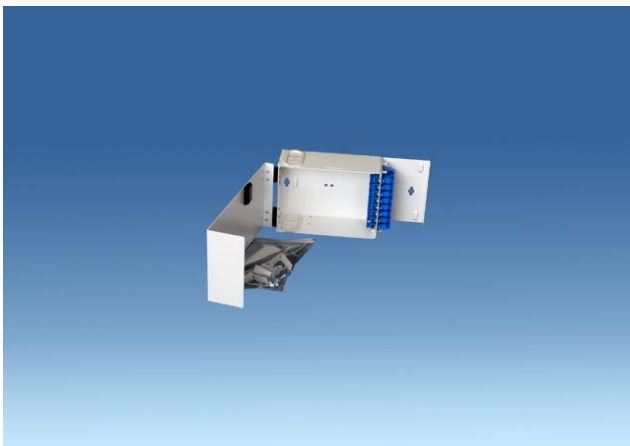
Compact Units – Many options for mounting including wall, junction box, mud ring and DIN- Rail.



BJ-2206

1 Plate

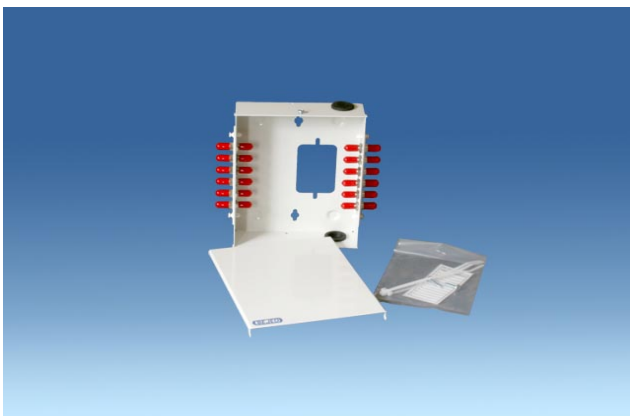
- DIN-Rail Mount
- Fiber pass through on top and bottom
- Side cover removes with screws
- 5" H × 1.75" W × 5.375" D



BJ-2141

2 Plates

- Compact wall mount unit
- Includes splice tray
- Ideally suited for small LANs
- Sturdy steel construction
- Size: 5.12" H × 10" W × 3.25" D



BJ-1880

2 Plates

- Light, durable aluminum construction
- Fits over wall entry locations
- Compact design is ideal for Cat 3/5/6 fiber
- Incoming cabling can be routed from top, bottom, or rear
- Size: 7.4" H × 5.63" W × 1.9" D

Wall Mount FDU's

Two-Door Wall Mounts – Allows separate craft/user access, also available with optional key locks.



BJ-2129

2 Plates

- Compact wall mount enclosure
- Steel construction
- Cable entrance/exit ports on top and bottom
- Size: 8" H × 13" W × 3" D



BJ-2136

4 Plates

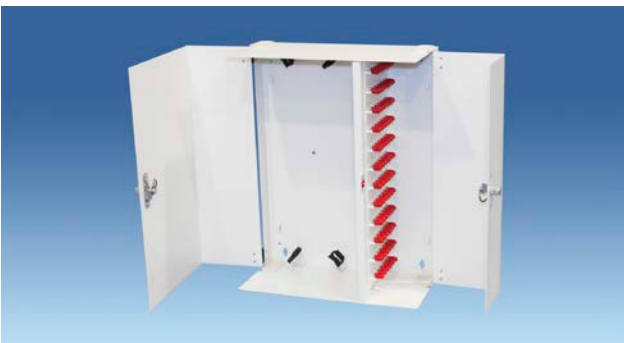
- Compact wall mount enclosure suited to small LANs and industrial applications
- Light, durable aluminum construction
- Available with optional key locks
- Ample space for splicing and storage
- Size: 13.5" H × 13.5" W × 3.5" D



BJ-2137

6 Plates

- Mid-size wall mount enclosure
- Sturdy steel construction
- Optional dual key locks available for added security
- Size: 13.5" H × 12.75 W × 4.25" D



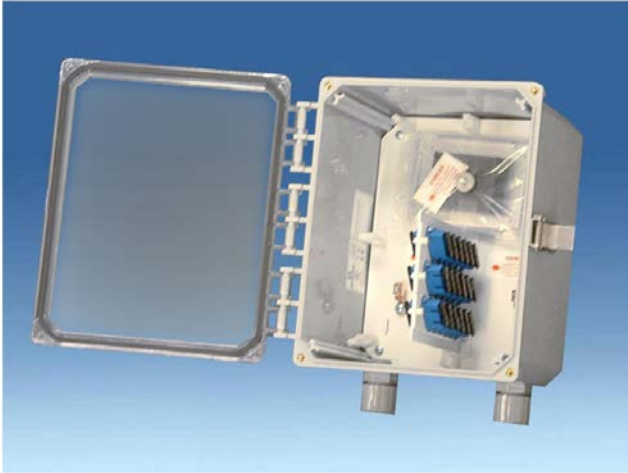
BJ-2154

12 Plates

- Low profile unit
- Sturdy steel construction
- Available in 19 or 23 inch rack mount
- Size: 13.5" H × 16.25" W × 6.6" D

Outdoor Enclosures

All Weather Units – Constructed of polycarbonate, these enclosures feature integrated hinges, compression seals and provisions for padlocks.



BJ-2179

3 Plates

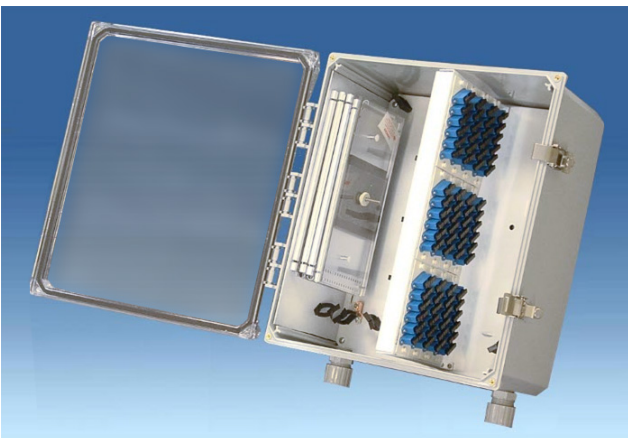
- Outdoor Enclosure
- Wall Mount
- Outer Enclosure is NEMA 4 rated
- Size: 12" H × 10" W × 6.5" D



BJ-2180

6 Plates

- Outdoor Enclosure
- Wall Mount
- Outer Enclosure is NEMA 4 rated
- Size: 16" H × 14" W × 6.5" D



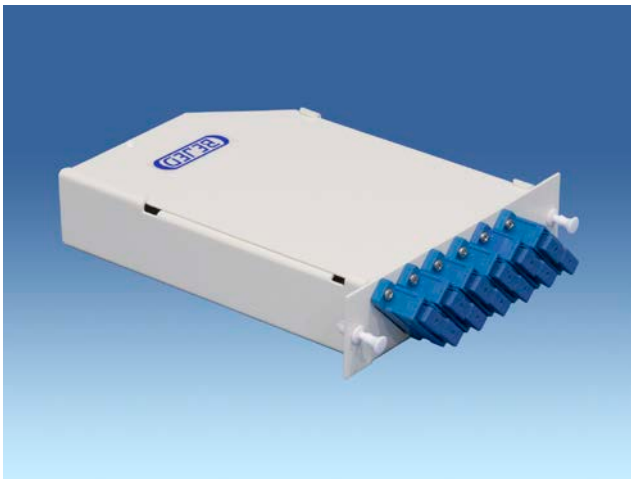
BJ-2181

12 Plates

- Outdoor enclosure
- Wall Mount
- Outer Enclosure is NEMA 4 rated
- Size: 14.75" H × 17.5" W × 6.25" D

Cassettes

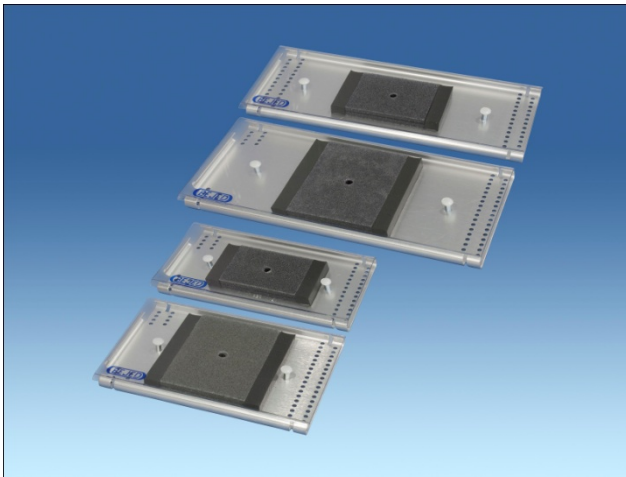
Fan-out Assembly - more connector density without the need for field termination or splicing, resulting in lower labor costs and improved reliability.



BJ-2182

- Use in place of a standard connector plate
- Recommended for use with **Plus Series** FDUs
- High density with integrated splice storage
- May be pre-terminated with pigtails (any length), MTP/MPO for easy installation or as a modular splice/patch enclosure
- Mounting brackets for wall or rack mounts available, allowing the cassettes to be installed independent of FDUs
- LC – Simplex, Duplex, or Quad
- SC – Simplex or Duplex

Splice Storage



BJ-1742C-005

- 12 Splice Pad
- 10.5"L x 4"W x .625"H

BJ-1742C-011

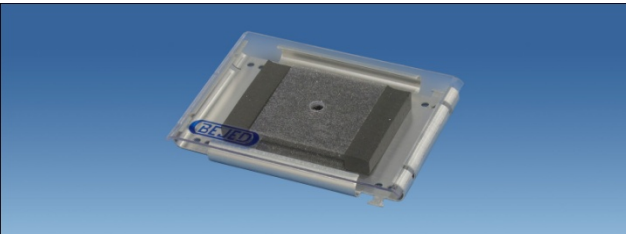
- 24 Splice Pad
- 10.5"L x 5"W x .625"H

BJ-1742D-005

- 12 Splice Pad
- 7.5"L x 4"W x .625"H

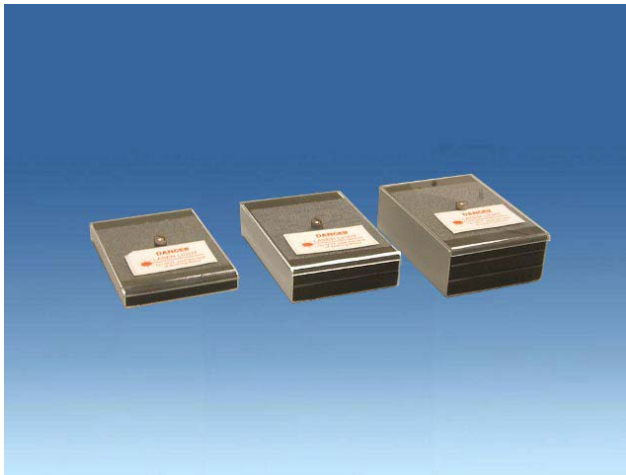
BJ-1742D-011

- 24 Splice Pad
- 7.5"L x 5"W x .625"H



BJ-1742E-012

- 12 Splice Pad
- Designed for use with BJ-2141 and BJ-2129
- 4.75"L x 5"W x .625"H



BJ-1521P

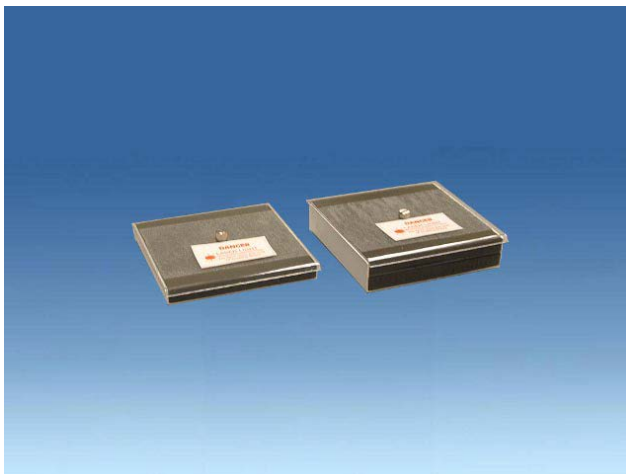
- 12 Splices
- 2.9L x 4.125W x .7"H

BJ-1521Q

- 24 Splices
- 2.9L x 4.125W x 1.2"H

BJ-1521R

- 36 Splices
- 2.9L x 4.125W x 1.6"H



BJ-1521A

- 24 Splice Pad
- 4.27L x 4.125W x .7"H

BJ-1521B

- 48 Splices
- 2.9L x 4.125W x 1.12"H

Jumpers and Pigtails



Jumpers provide point-to-point connections between fiber optic equipment. Pigtails are used in the splicing of fiber. We are able to comply with the specifications of the customer, whether they are for single mode or multimode, SC, FC, ST, LC, or MTRJ, as well as meeting the length and polish-type needs of the customer.

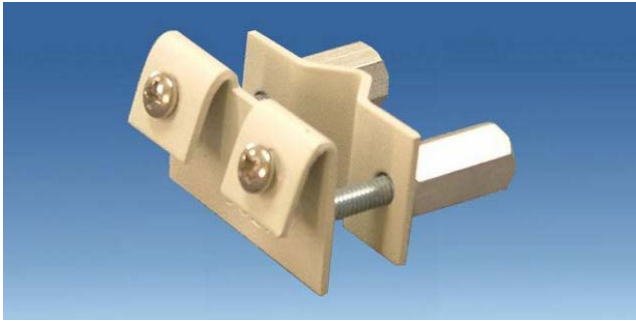


BJ-5ABCD-EFGHI

A	B	C	D	E	FGHI
1 st End Connector	2 nd End Connector	Polish Type	Fiber Type	Cable Type	Length
1= ST	1= ST	1= PC	A= Single Mode	S= Simplex	XXXF= Length in Feet
2= SC	2= SC	2= Super PC	B= Multi-Mode	Z= Duplex	XXXM= Length in Meters
3= FC	3= FC	3= Angled	C= Special	R= Ruggedized Simplex	
4= D4	4= D4	4= Ultra PC		RD= Ruggedized Duplex	
5= ESCON	5= ESCON	0= Standard		P= Duplex Plenum Rated	
6= LC	6= LC			N= 900 Micron	
7= MTRJ/F	7= MTRJ/F			W= 6 Strand	
8= MTRJ/M	8= MTRJ/M			X= 12 Strand	
9= Special	9= Special			Y= 24 Strand	
	0= PigTail			*CUSTOM	

*Custom Outdoor and Multi-fiber Cable Available

Accessories



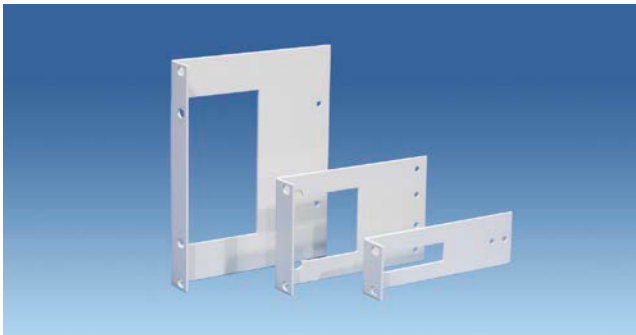
BJ-1796

- Cable Clamp
- Constructed from 16 gauge steel
- Designed to avoid crushing outer sheaths or other damage to cable
- Prevents cables from twisting



BJ-2005

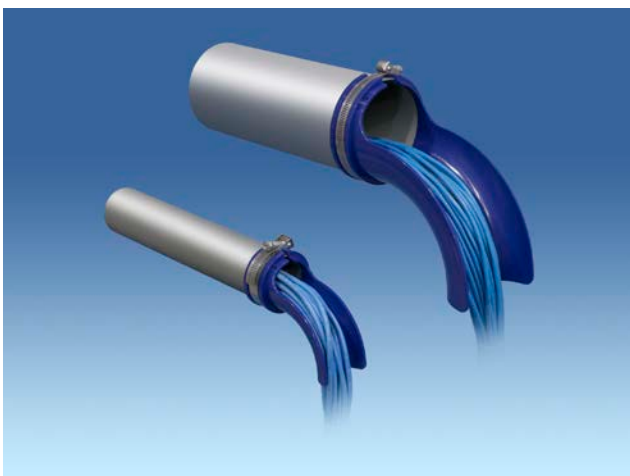
- 19 to 23 inch rack adapter
- Constructed from 11 gauge steel
- Makes any 19 inch unit fit a 23 inch rack



Flush Mount Kits

- Available for the Standard-Series and Plus-Series FDUs shown on pages 4 and 5

Cable Spillway™



BJ-2049

- Fits 3" and 4" EMT as well as 80,90 and 100mm conduit
- Constructed from fire retardant ABS
- Self-fastening tie down system
- Blue Color

Portfinder

Reliable circuit tracing that does not require any special jacks or panels.



BJ-1891

Portfinder provides a means for reliably tracing a circuit from the workstation all the way to the router or switch while retaining full Category 6 bandwidth capabilities and utilizing existing cabling.



- Provides indications of all interconnect points for a given cable run
- Passes Indicator signal through existing wiring
- Meets Category 6 cabling standards
- Anti-Snag design makes for easy installation
- Coaxial power connections provide for reliable “first attempt” activation



Ordering Information

Use the Part Number of BJ-1981P-XXXXF, in which XXX is the length desired in feet. For example, a 15 foot **Portfinder** is part number BJ-1981P-015F.

*Sample units available

